

ROAD INDEX

A	ANNE LANE D2	J	JACKSON DRIVE PVT A6	S	SAYBROOK LAKE D2
	ASCOOT LANE E3-4		JACOBS DRIVE (PVT) F2		SHADYWOOD DR D2
	AUBURN ROAD C1-C7		JENNIFER DRIVE B2		SHILSHO WOOD CIR D4
	AUBURN LAKES DRIVE A3				SHAW RD FA-16
	AUBURNDALE DR B6				SIGNAL HILL (PVT) A3
					SNOW RD F1-F2
					SOUTH BLVD (PVT) A5
					SOUTH PIN TAIL (PVT) A3
					SPICEBERRY CIR C4
					STAFFORD RD A2-C2
					STAFFORDSHIRE CT D2
					SUNSET DR D5-A6
B	BAINBRIDGE ROAD A4	K	KASIK DRIVE PVT A6		
	BARTHOLDMEW RD. A5-D6		KOPAS DRIVE (PVT) D5		
	BASS RUN (PVT) A3				
	BLUE SPRUCE TR (PVT) A83				
	BRIDGE CREEK TR C4				
	BROADWAY DRIVE (PVT) A5				
	BROCKFIELD DRIVE A7				
C	CARRIAGE HILL D3	L	LAKE DR (PVT) A6		
	CHICKASHAY LAKE D6		LANCASTER DR A5		
	CHIRPING LAKE (PVT) A3		LINDSAY LANE E4		
	CRANEHAR TRAIL A3		LONG DRIVE (PVT) A3		
	CINNAMON TRAIL C-4-5		LONGVIEW TRAIL C4		
	CLEVELAND DRIVE PVT. A6		LOST LAKES TRAIL A2		
	CLUM LANE (PVT) A2		LUCKY BELL LAKE A1-A2		
	COLONIAL COURT E2				
	CRACKEL ROAD A7-E7				
	CREEKSIDE DRIVE A4				
	CREIGHTON DRIVE C3				
	CRYSTAL TRAIL A1-B				
	CURRY LANE C3				
D	DERBYSHIRE LANE D4	M	MAGNOLIA LANE (PVT) D-B3		
	DOGWOOD LAKE (PVT) A3		MARYDALE DRIVE D-B3		
	DOWNEY GLEN TR D2		MEADOW LANE C3		
E	EAGLES POINTE (PVT) A3		MESSENGER ROAD E1-D4		
	EDWARDS LANE A7		MT PLEASANT DRIVE #14B		
	EASTWOOD DRIVE B6		MUNN ROAD B1-B7		
F	FAIRWAY VIEW (PVT) A3	N	NORTH BLVD PNT. A6		
	FOX ROAD F6-F7		NORTH PIN TAIL (PVT) A3		
	FRANKS ROAD B1-D1				
	FRANKLIN ROAD (PVT) B6				
G	GREATWOOD LANE D5	O	OVERLOOK BROOK C1P1A3		
	GREENWAY TRAIL (PVT) A2		OVERLOOK BROOK D1P1A3		
H	HEATHER HILL (PVT) A3	P	POINTE BREEZE (PVT) A3		
I	INDIAN HILLS DR. A4		PRIMROSE COURT A6		
J	JACKSON DR. D1	Q	QUINN ROAD A5-A6		
K	KOPAS DRIVE (PVT) D5	R	RAVENNA ROAD E1-E7		
L	LANCASTER DR A5		RIVER WOOD LN. C1		
M	MARYDALE DRIVE D-B3		ROBERT LAKE C3-4		
N	NORTH BLVD PNT. A6		ROBIN WOOD LANE D2-3		
O	OVERLOOK BROOK C1P1A3	T	TAYLOR MAY RD. A5-E5		
P	POINTE BREEZE (PVT) A3		THORPE ROAD B5-B7		
Q	QUINN ROAD A5-A6		TIMBER LN. C3		
R	RAVENNA ROAD E1-E7		TWIN CREEKS (PVT) A3		
S	SAYBROOK LAKE D2	U	US. 422 A4-F4		
T	TAYLOR MAY RD. A5-E5	V	VALLEY ROAD F1-E4		
U	US. 422 A4-F4		VICTORIA DRIVE D2		
V	VALLEY ROAD F1-E4	W	WASHINGTON STREET A3-E4		
W	WASHINGTON STREET A3-E4		WATERFORD TRAIL A6		
X	WATERFORD TRAIL A6		WEATHERTOP LAKE A2		
Y	WEATHERTOP LAKE A2		WHISPER WOOD CIRCLE A1		
Z	WHISPER WOOD CIRCLE A1		WHITE OAK DRIVE B6		
	WHITE OAK DRIVE B6		WIDGON DRIVE A5-B5		
	WIDGON DRIVE A5-B5		WINDWARD WAY (PVT) A5		
	WINDWARD WAY (PVT) A5		WING ROAD C3-D4		
	WING ROAD C3-D4		WINGATE DR. C4		
	WINGATE DR. C4		WOOD ACRE TRAIL A2		
	WOOD ACRE TRAIL A2		WOODSONG WAY (PVT) A3		
	WOODSONG WAY (PVT) A3				

1-800-345-7334

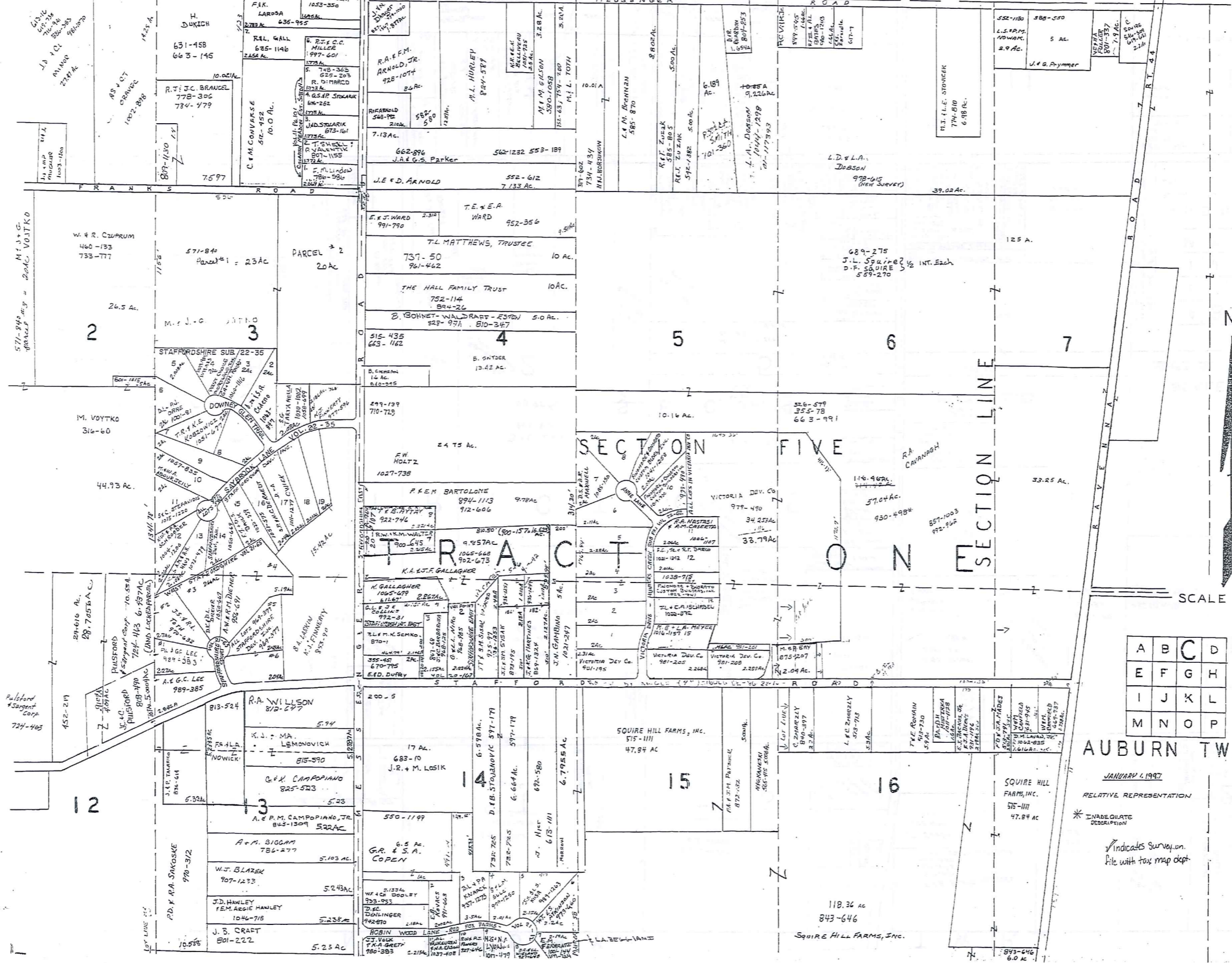


AUBURN TOWNSHIP

SCALE 1" = 2000'
 ROBERT L. PHILLIPS
 GEORGIA COUNTY ENGINEER

UNPAVED ROAD
 PAVED ROAD
 TOWNSHIP LINE
 COUNTY LINE

NEWBURY TOWNSHIP



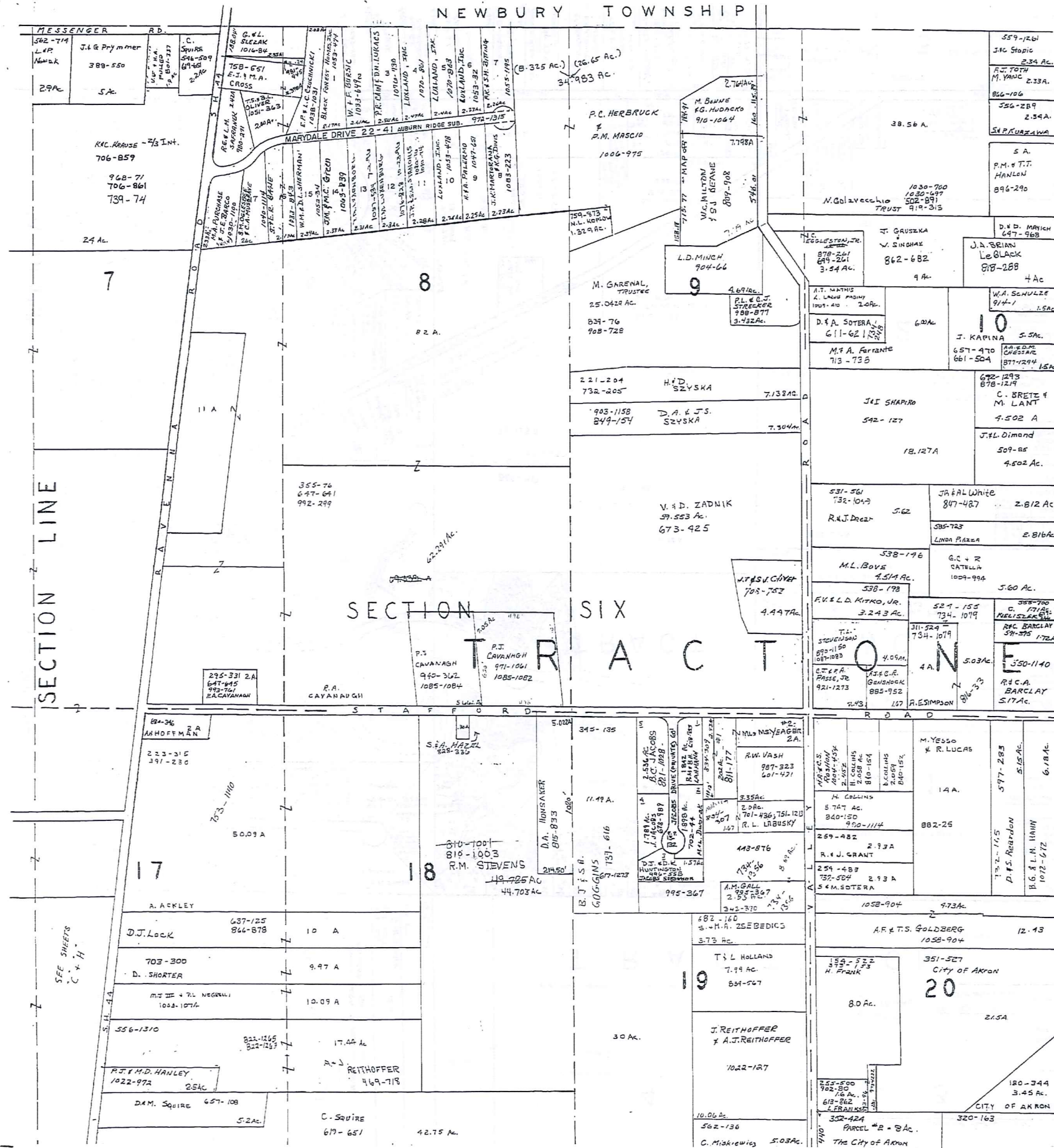
TRU-REDI
1-800-345-7334
SCALE IN 1/100 OF AN INCH

SCALE 1"=300'

A	B	C	D
E	F	G	H
I	J	K	L
M	N	O	P

AUBURN TWP.

JANUARY 4, 1997
RELATIVE REPRESENTATION
* INADEQUATE DESCRIPTION
Indicates Survey on file with tax map dept.



BURTON TWP.

T R O Y T O W N S H I P



SCALE 1" = 300'

JANUARY 1, 1997
RELATIVE REPRESENTATION

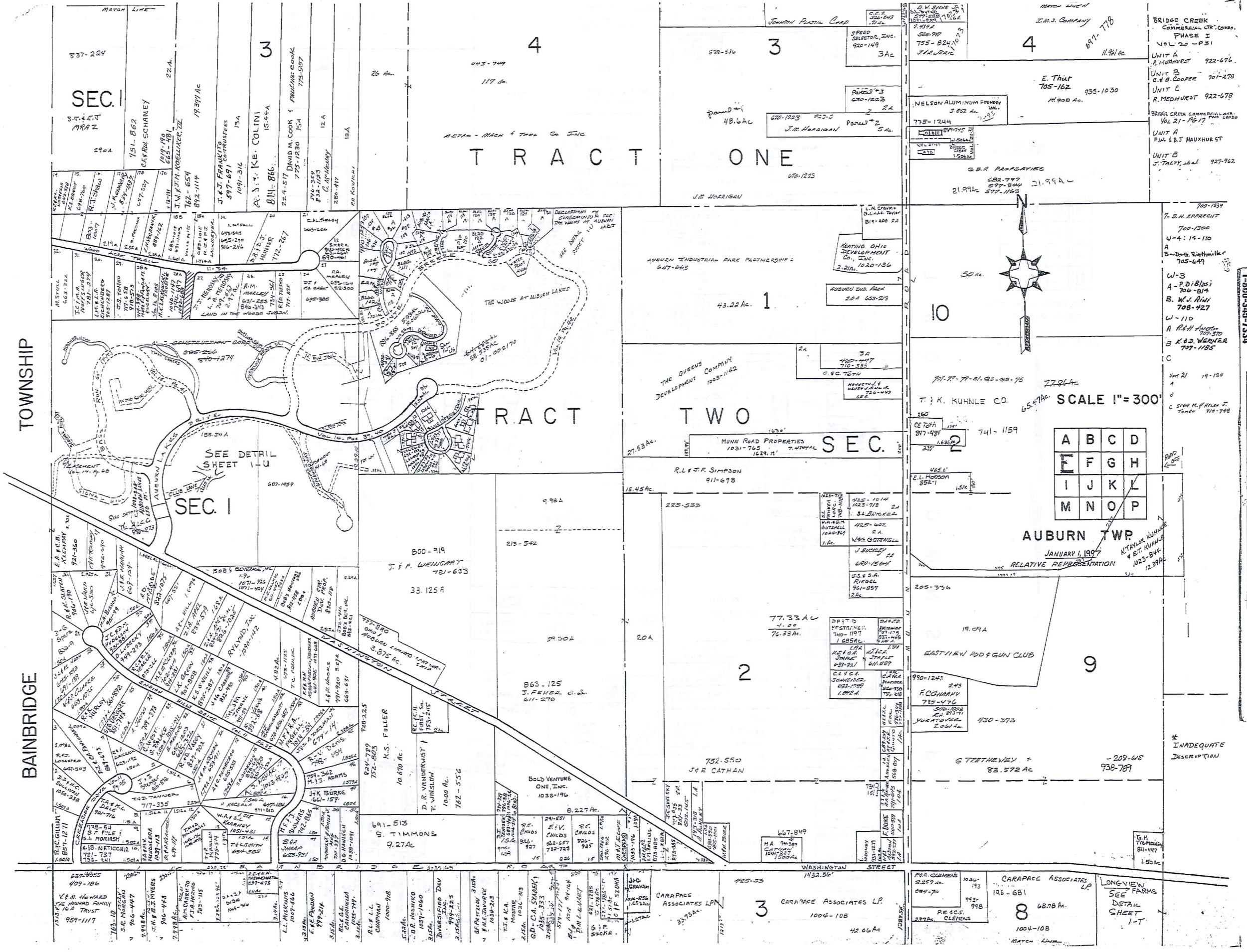
A	B	C	D
E	F	G	H
I	J	K	L
M	N	O	P

AUBURN TWP.

* INADEQUATE DESCRIPTION

✓ INDICATES SURVEY ON FILE WITH TAX MAP DEPT.





TOWNSHIP

BAINBRIDGE

TRACT ONE

TRACT TWO

SEC. I

SEC. 2

SCALE 1"=300'

AUBURN TWP
JANUARY 1, 1997
RELATIVE REPRESENTATION

A	B	C	D
E	F	G	H
I	J	K	L
M	N	O	P

TRIM-BEEL
1-800-345-7334

SCALE IN VARIOUS INCHES

BRIDGE CREEK
COMMERCIAL CR. COMB.
PHASE I
VOL. 20 - P. 31
UNIT A
R. MEDHURST 922-676
UNIT B
C. & B. COOPER 901-278
UNIT C
R. MEDHURST 922-678
BRIDGE CREEK COMMERCIAL CR. COMB.
VOL. 21 - P. 17
UNIT A
P.W. & B.J. HAUHURST
UNIT B
J. TALLEY, JR. 927-962

7. S.H. APPRENT
700-1300
W-4: 14-110
A
B-Dora, Rietmiller
705-649
W-3
A-P.D. BISSI
706-814
B. W.V. RAIN
708-927
W-110
A R.H. AMOS
707-370
B K.D. WARNER
707-1185
C
Unit 21 14-124
A
C STON M. HALEY J.
Towner 710-798

* INADEQUATE
DESCRIPTION

LONGVIEW FARMS
SEE
DETAIL
SHEET
1-T

3
337-224
SEC. 1
S. J. & E. T. MRAZ
22.6 A.
731-862
OFFICIAL SCHANEY
10/19/88
10/19/88
665-481
1939/114
J. J. FRANKLIN
697-691
10/19/88
134
A. J. KE. COLINI
15-4-4 A
811-866
22-4-517
DAVID M. COOK & FREDERICK COOK
779-1230 15 A
773-907
12 A
C. M. HANCOCK
28-4-17
18 A

3
599-536
SPEED SELECTOR, INC.
920-149
3 A
J.M. HORVATH
670-1823
48.6 AC
J.M. HORVATH
670-1823
2 A
5 AC

4
E. THUR
705-162
11.96 AC
935-1030
M. 908 AC
NELSON ALUMINUM FOUNDRY
3.652 AC
775-1244
G.B. PROPERTIES
682-747
21.99 AC
597-844
21.99 AC

26 AC
443-749
117 AC
ACTAO - MACH & TOOL CO INC
TRACT ONE
43.22 AC
1
AUBURN INDUSTRIAL PARK PARTNERSHIP I
647-665
HEATING OIL
DEVELOPMENT
CO., INC.
3.21 AC, 1020-136
AUBURN IND. PARK
2.04 655-273
THE QUEENS
DEVELOPMENT COMPANY
1023-1142
MUNN ROAD PROPERTIES
1031-745
7.07 AC
R.L. & F. SIMPSON
911-698
15.45 AC
2
77.33 AC
76.33 AC
EASTVIEW RODEO GUN CLUB
19.09 AC
990-1243
E. COHARV
733-476
430-373
G. TRETHERWEY +
83.572 AC
-208-648
938-789

SEC. I
SEE DETAIL SHEET 1-U
AUBURN LAKES
3.875 AC
J. & F. WEINGART
781-603
33-125 A
J. F. FULLER
10-670 AC
752-803
D.R. VANDERKAM
10-000 AC
782-556
BOLD VENTURE
ONE, INC.
1035-196
8.227 AC
D. R. WINSLOW
9.27 AC
W.A.S. THE
KARNEY
1051-431
J. J. SWAPP
625-921
W.A.S. THE
KARNEY
1051-431
J. J. SWAPP
625-921
W.A.S. THE
KARNEY
1051-431
J. J. SWAPP
625-921

2
77.33 AC
76.33 AC
EASTVIEW RODEO GUN CLUB
19.09 AC
990-1243
E. COHARV
733-476
430-373
G. TRETHERWEY +
83.572 AC
-208-648
938-789
WASHINGTON STREET
1432.56'

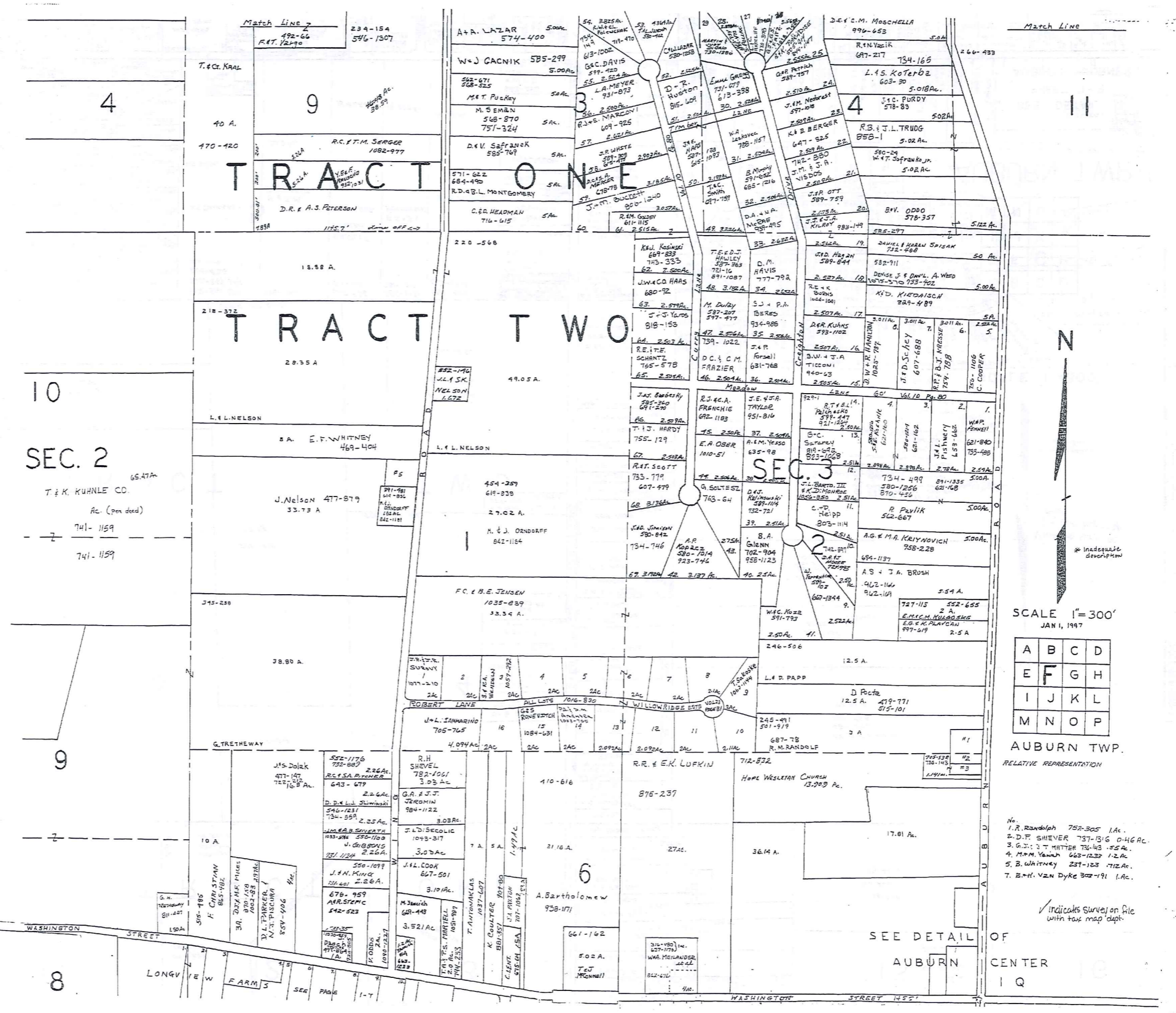
9
19.09 AC
990-1243
E. COHARV
733-476
430-373
G. TRETHERWEY +
83.572 AC
-208-648
938-789
WASHINGTON STREET
1432.56'

4
443-749
117 AC
ACTAO - MACH & TOOL CO INC
TRACT ONE
43.22 AC
1
AUBURN INDUSTRIAL PARK PARTNERSHIP I
647-665
HEATING OIL
DEVELOPMENT
CO., INC.
3.21 AC, 1020-136
AUBURN IND. PARK
2.04 655-273
THE QUEENS
DEVELOPMENT COMPANY
1023-1142
MUNN ROAD PROPERTIES
1031-745
7.07 AC
R.L. & F. SIMPSON
911-698
15.45 AC
2
77.33 AC
76.33 AC
EASTVIEW RODEO GUN CLUB
19.09 AC
990-1243
E. COHARV
733-476
430-373
G. TRETHERWEY +
83.572 AC
-208-648
938-789
WASHINGTON STREET
1432.56'

3
CARAPACE ASSOCIATES LP
1004-108
42.06 AC
CARAPACE ASSOCIATES LP
1004-108
42.06 AC

8
CARAPACE ASSOCIATES LP
1004-108
42.06 AC
CARAPACE ASSOCIATES LP
1004-108
42.06 AC

8
CARAPACE ASSOCIATES LP
1004-108
42.06 AC
CARAPACE ASSOCIATES LP
1004-108
42.06 AC



TRACT-REID
 1-800-345-7334
 SCALE IN 1/100 OF AN INCH

SCALE 1"=300'
 JAN 1, 1997

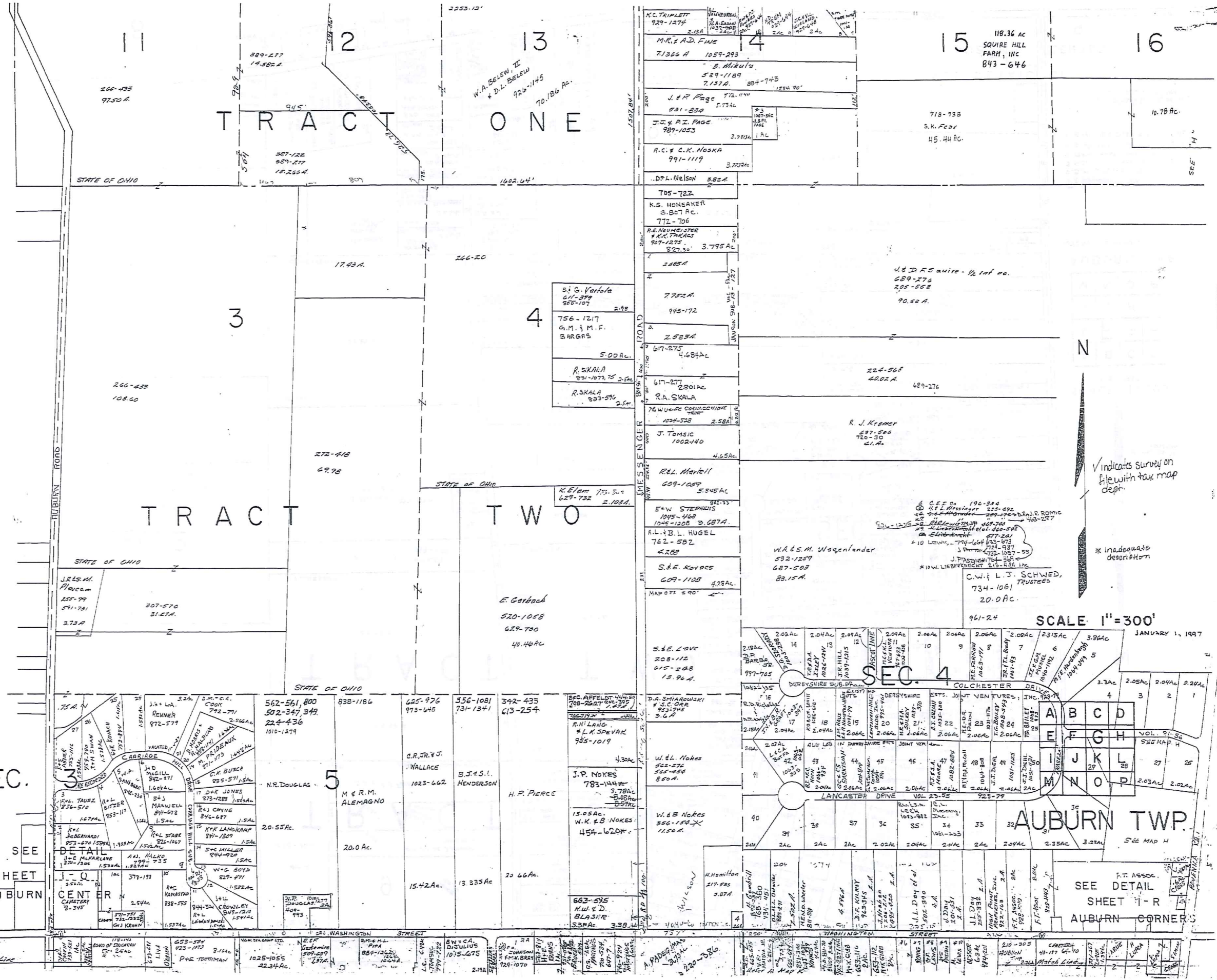
A	B	C	D
E	F	G	H
I	J	K	L
M	N	O	P

 AUBURN TWP.
 RELATIVE REPRESENTATION

- No.
1. R. Randolph 752-305 1 Ac.
 2. D.F. Shiever 737-1316 0.46 Ac.
 3. G.J. Matter 734-43 .55 Ac.
 4. M.M. Vann 663-1237 1.2 Ac.
 5. B. Whitney 237-123 712 Ac.
 7. B.H. Vzn Dyke 302-191 1 Ac.

✓ Indicates survey on file
 with tax map dept.

SEE DETAIL OF
 AUBURN
 CENTER
 1 Q



SEC. 3
SEE SHEET AUBURN

Indicates survey on file with tax map dept.

* inadequate description

SCALE 1" = 300'

JANUARY 1, 1997

AUBURN TWP.
SEE MAP H
SEE DETAIL SHEET I-R AUBURN CORNER

TWM-REDI
1-800-345-7334

BAINBRIDGE TOWNSHIP

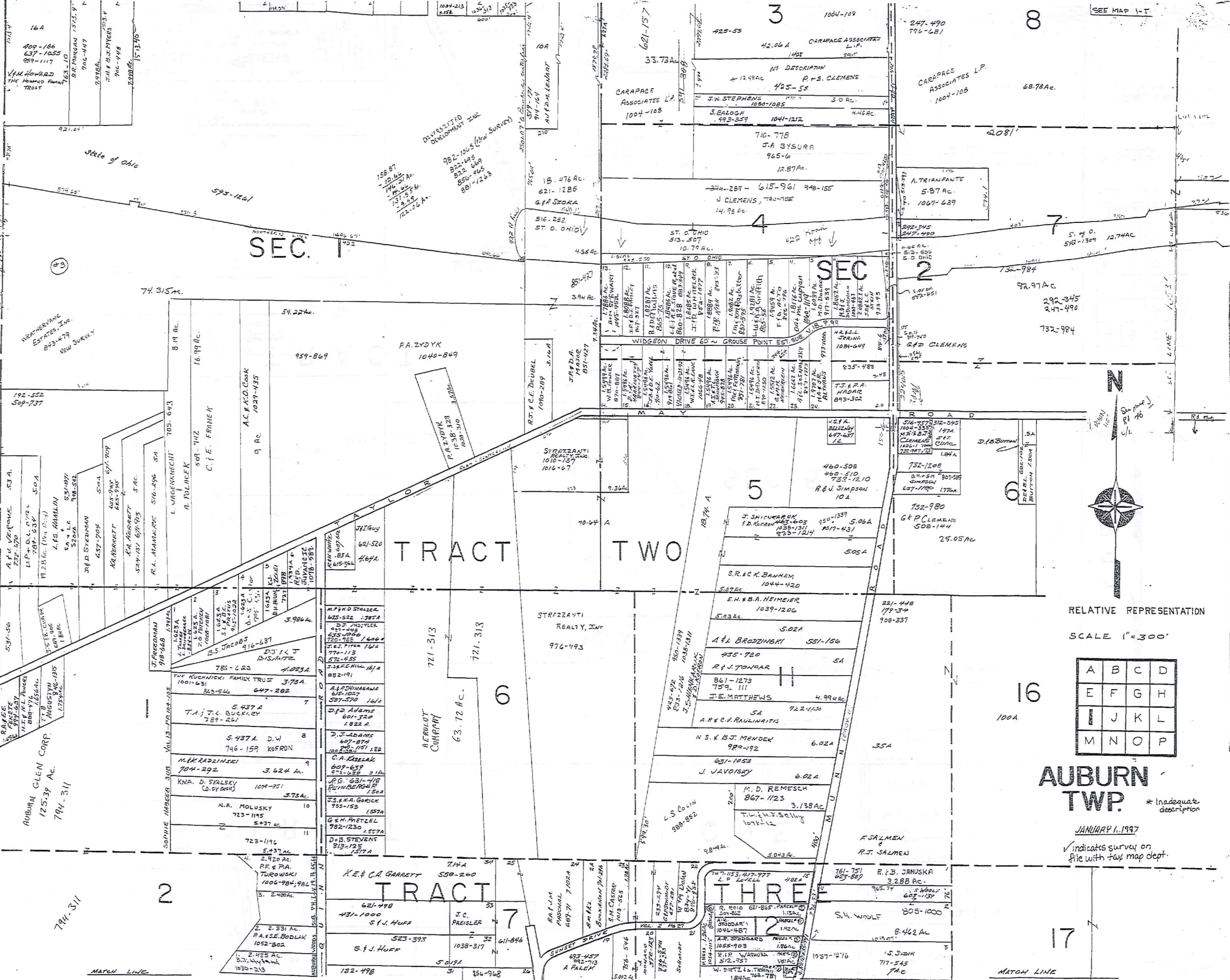
16A
900-186
837-1855
853-1117
V.M. HOWARD
THE HOWARD PARTNERSHIP
TRUST
822 POND
1323.9'
906-4477
3.99 AC.
J.H. & S.M. MYERS
906-4488
906-4488
1513.40'

SEC. 1

SEC. 2

TRACT TWO

TRACT THREE



RELATIVE REPRESENTATION
SCALE 1"=300'

A	B	C	D
E	F	G	H
I	J	K	L
M	N	O	P

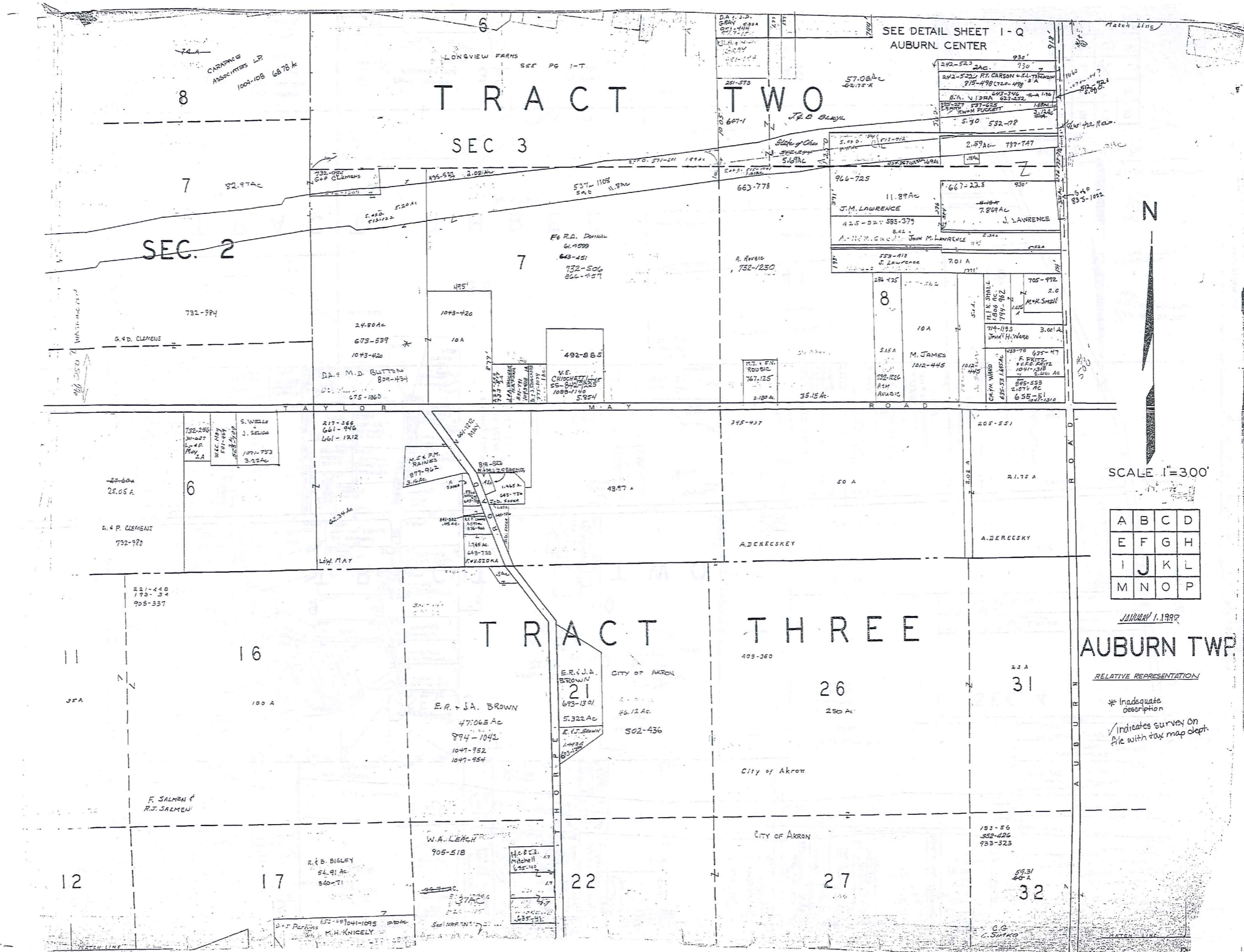
AUBURN TWP. * Inadequate description

JANUARY 1, 1997
Indicates survey on file with tax map dept.

TRIM-BEDI
1-800-345-7334
SCALE IN 1/16 OF AN INCH

10

17



SEE DETAIL SHEET I-Q
AUBURN CENTER

TRACT TWO

SEC 3

SEC. 2

TRACT THREE

AUBURN TWP

A	B	C	D
E	F	G	H
I	J	K	L
M	N	O	P

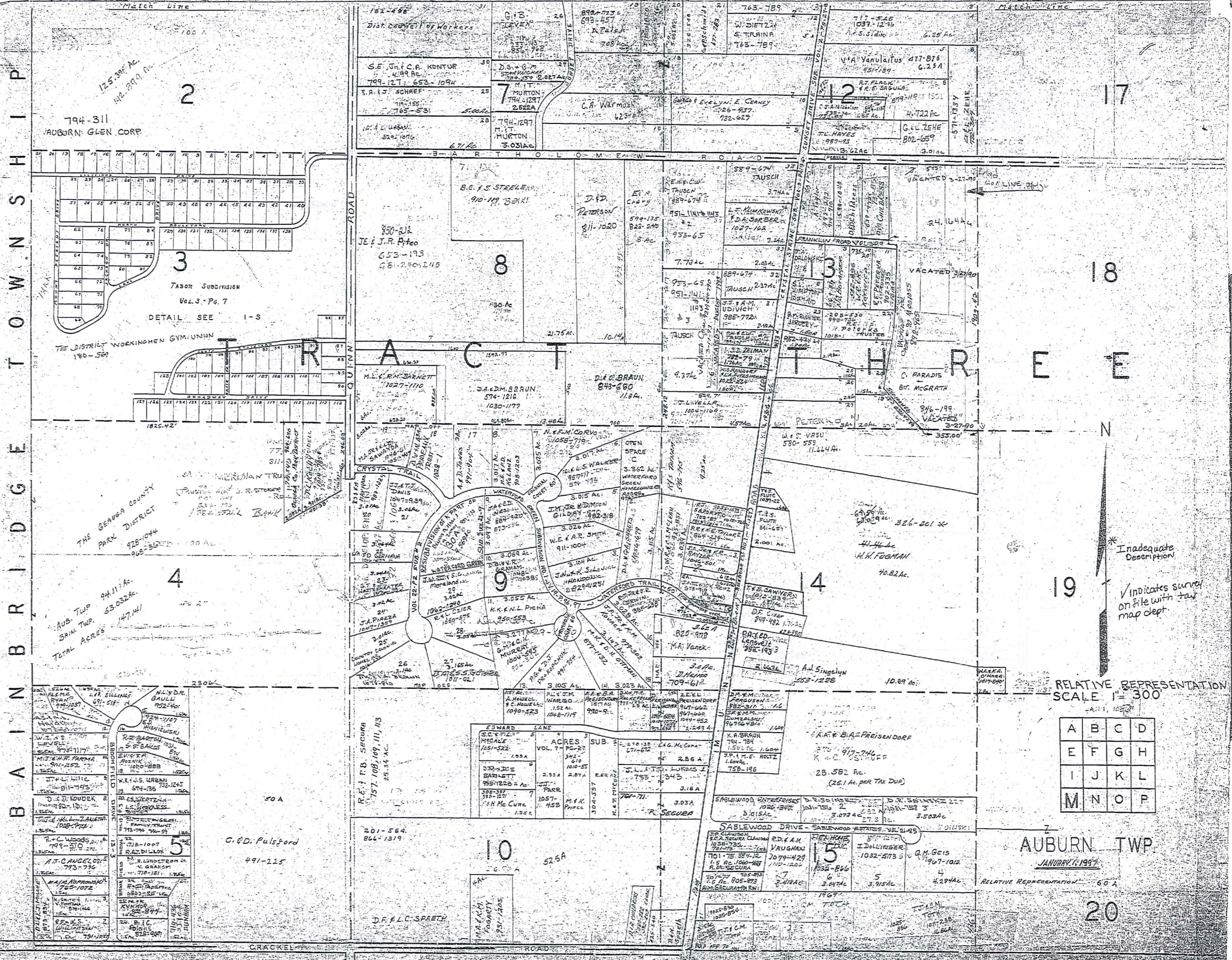
SCALE 1"=300'

JANUARY 1, 1997

RELATIVE REPRESENTATION

* Inadequate description
/ indicates survey on file with tax map dept.

TRW-RED
1-800-345-7334
SCALE IN 1/10 OF AN INCH



B A I N B R I D G E T O W N S H I P

794-311
AUBORN: GLEN CORP.

2

3

4

5

8

9

10

12

13

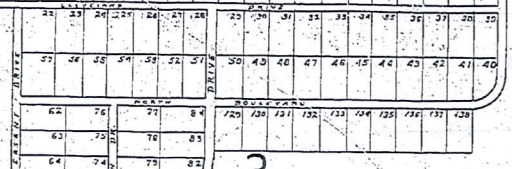
15

17

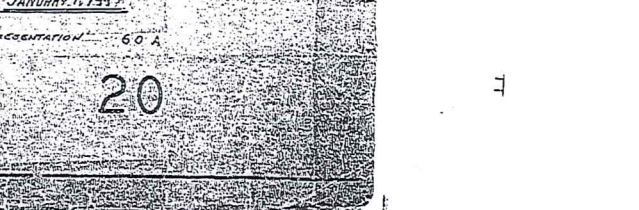
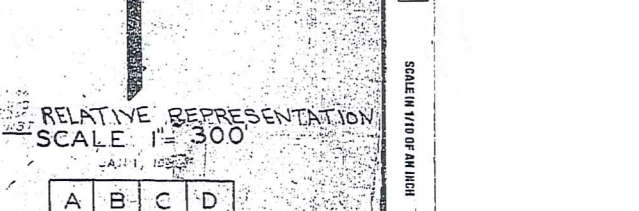
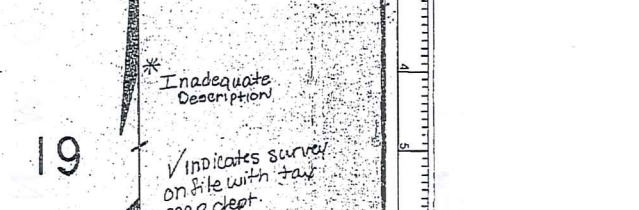
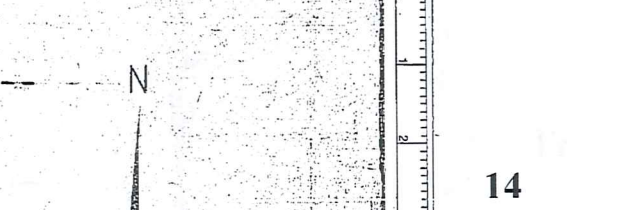
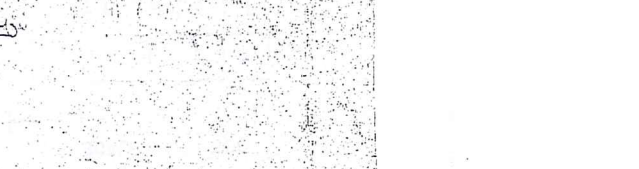
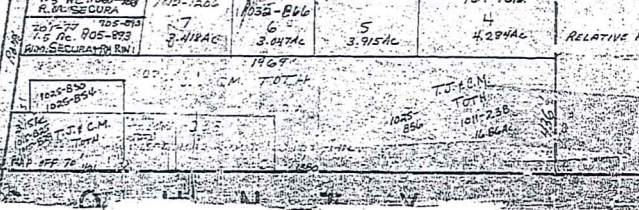
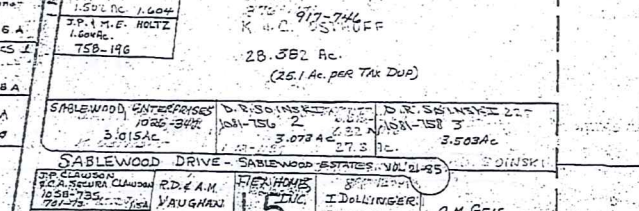
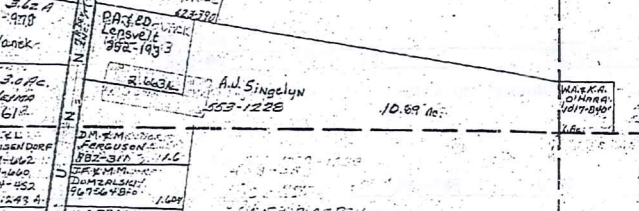
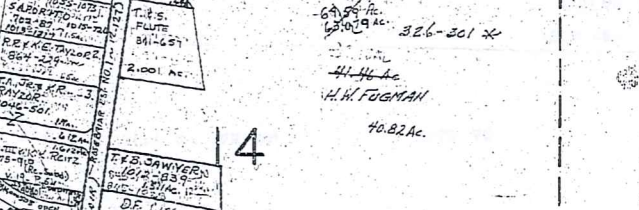
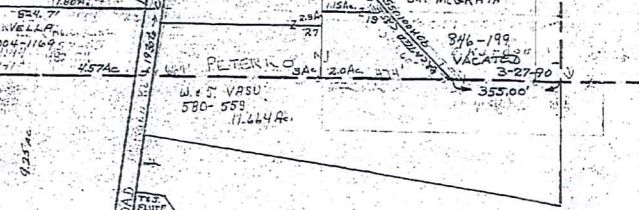
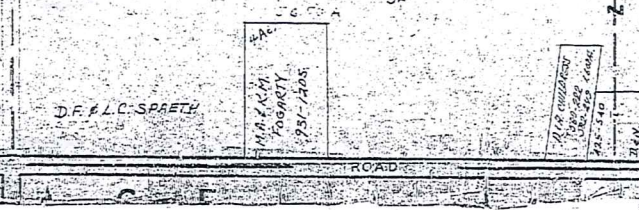
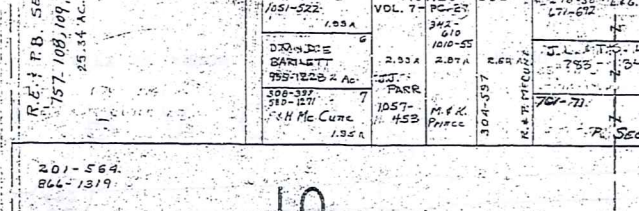
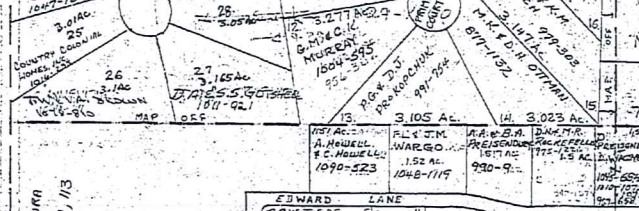
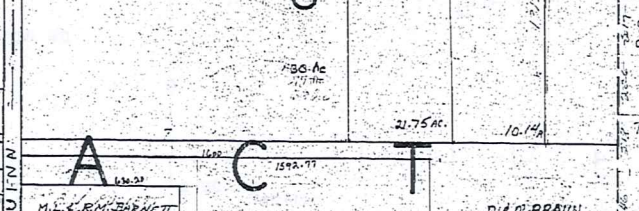
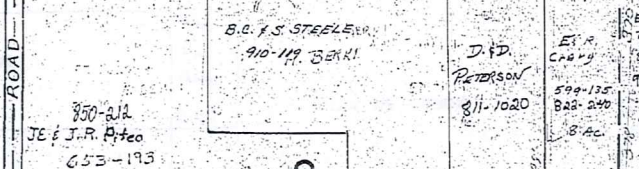
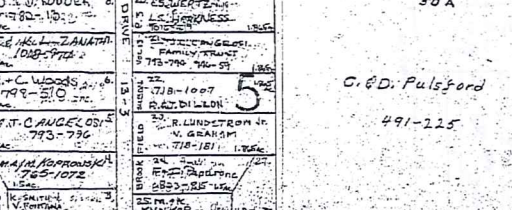
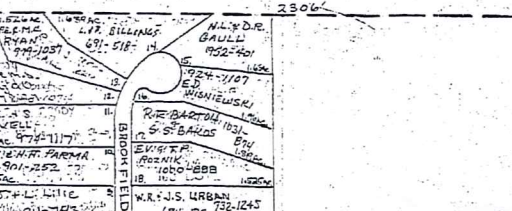
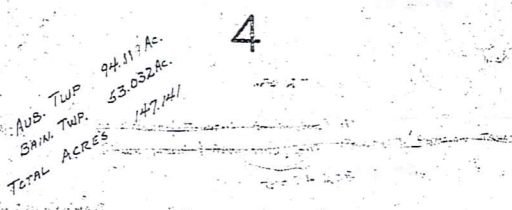
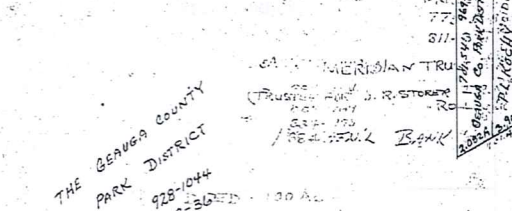
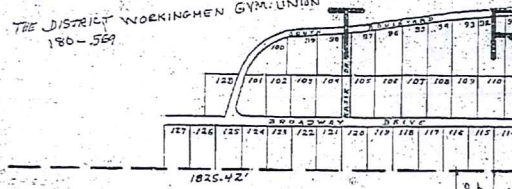
18

19

20



TABOR SUBDIVISION
Vol. 3 - Pg. 7
DETAIL SEE I-S



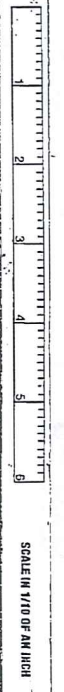
RELATIVE REPRESENTATION
SCALE 1" = 300'

A	B	C	D
E	F	G	H
I	J	K	L
M	N	O	P

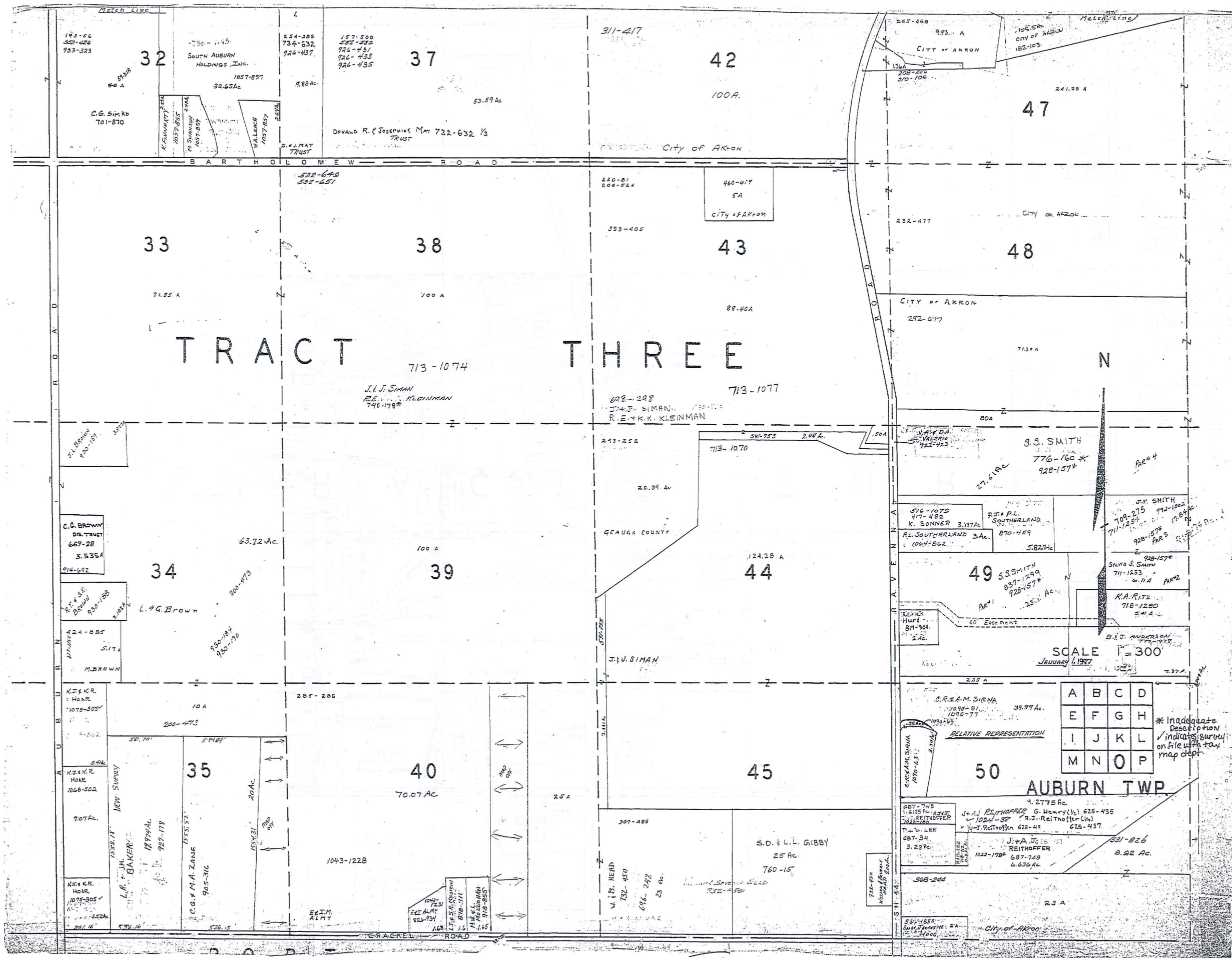
AUBURN TWP
JANUARY 6, 1993

RELATIVE REPRESENTATION 60'

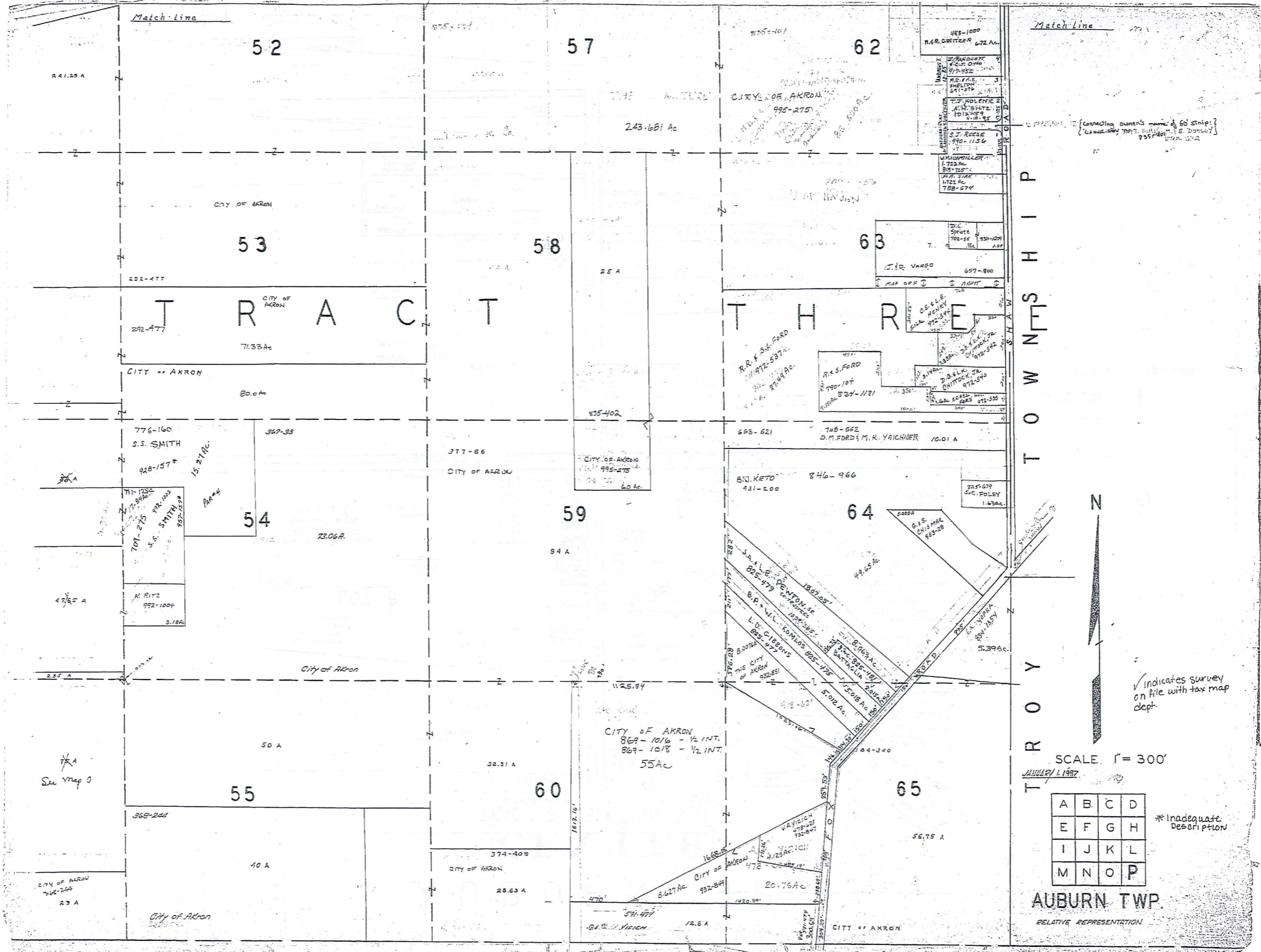
TRM-REDI
1-800-349-1334



* Inadequate Description
✓ Indicates survey on file with tax map dept.



TRM-REDI
1-800-345-7334
SCALE IN 1/100 OF AN INCH



TRIM-REDI
 1-800-345-7334
 SCALE IN 1/16 OF AN INCH

A	B	C	D
E	F	G	H
I	J	K	L
M	N	O	P

* Inadequate Description

AUBURN TWP.
 RELATIVE REPRESENTATION

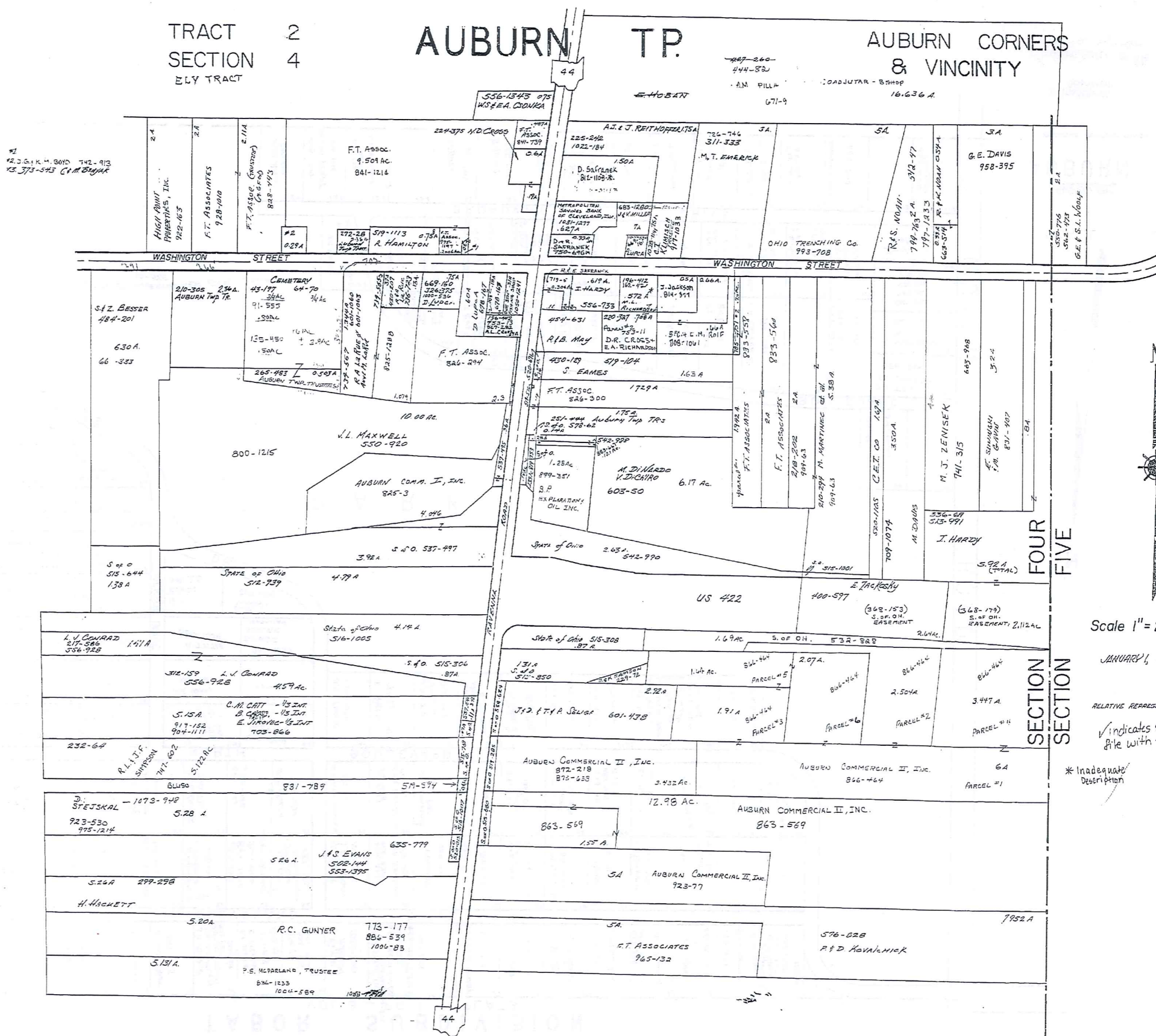
SCALE 1" = 300'
 JANUARY 1, 1997

✓ Indicates survey on file with tax map dept.

TRACT 2
SECTION 4
ELY TRACT

AUBURN TP.

AUBURN CORNERS
& VICINITY



Scale 1" = 2.5 ch. = 165 ft.

JANUARY, 1997

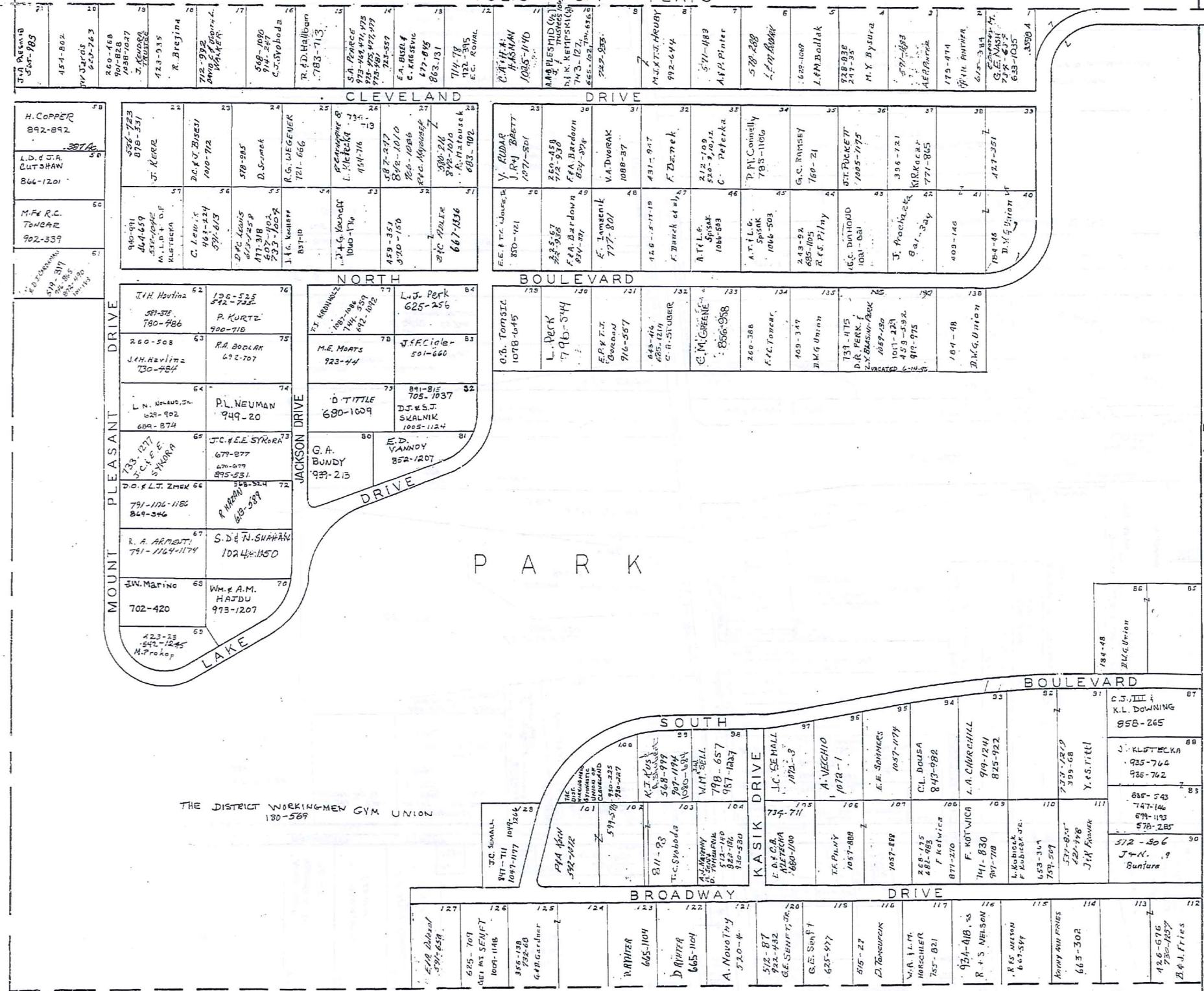
RELATIVE REPRESENTATION
 ✓ indicates survey on file with tax map dept.

* Inadequate Description

TRIM-REDI
 1-800-345-7334
 SCALE IN 1/10 OF AN INCH

TABOR SUBDIVISION

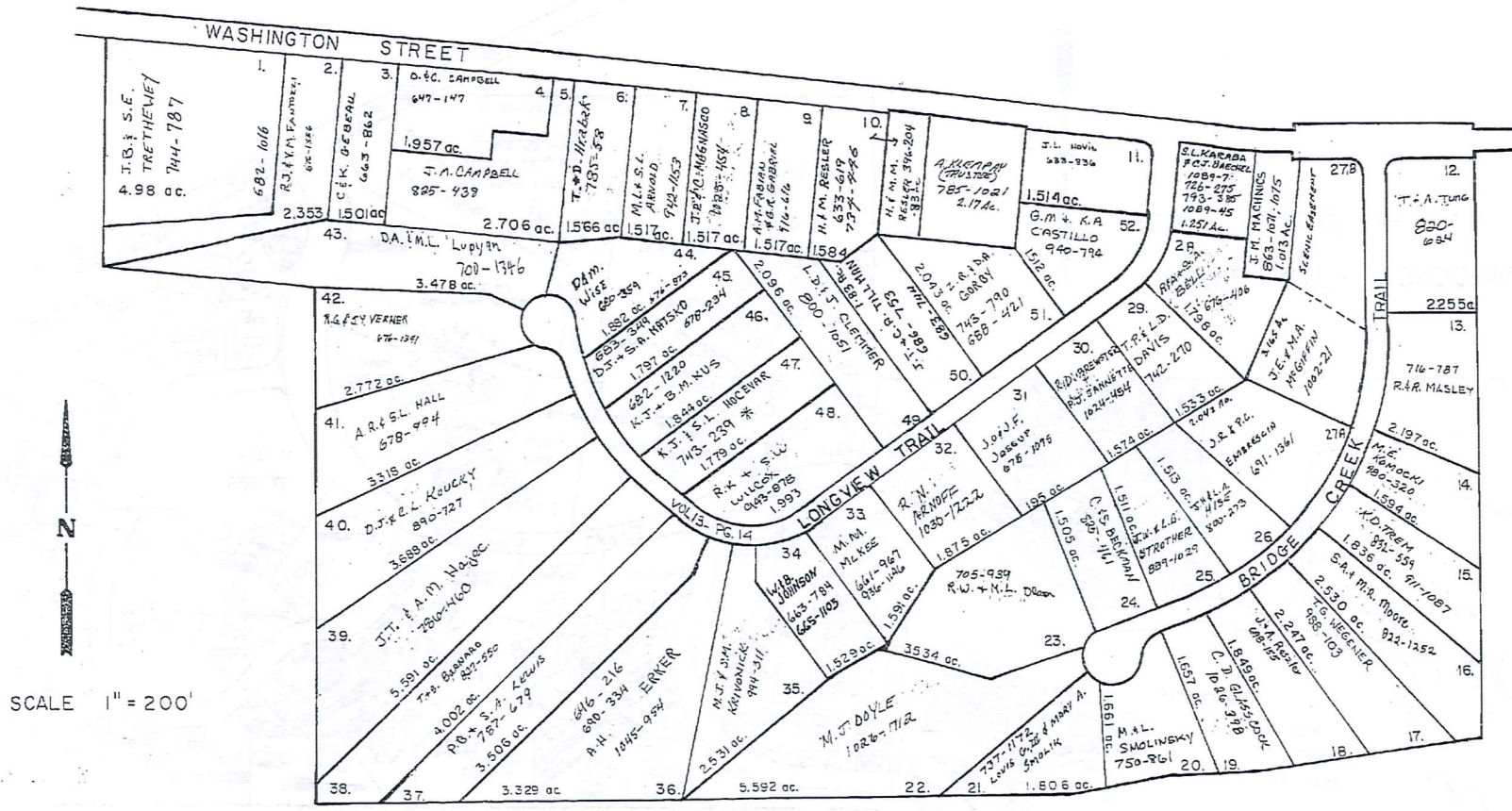
VOL. 3 PLATS 7



AUBURN

OL. 8 SEC. 2

OL. 6 SEC. 3 TRACT 2



SCALE 1" = 200'

S/L 27 RESUB VOL. 14. PG. 50

TRM-REDI
1-800-345-7334

SCALE IN 1/16 OF AN INCH

LONGVIEW FARMS 1 & 2

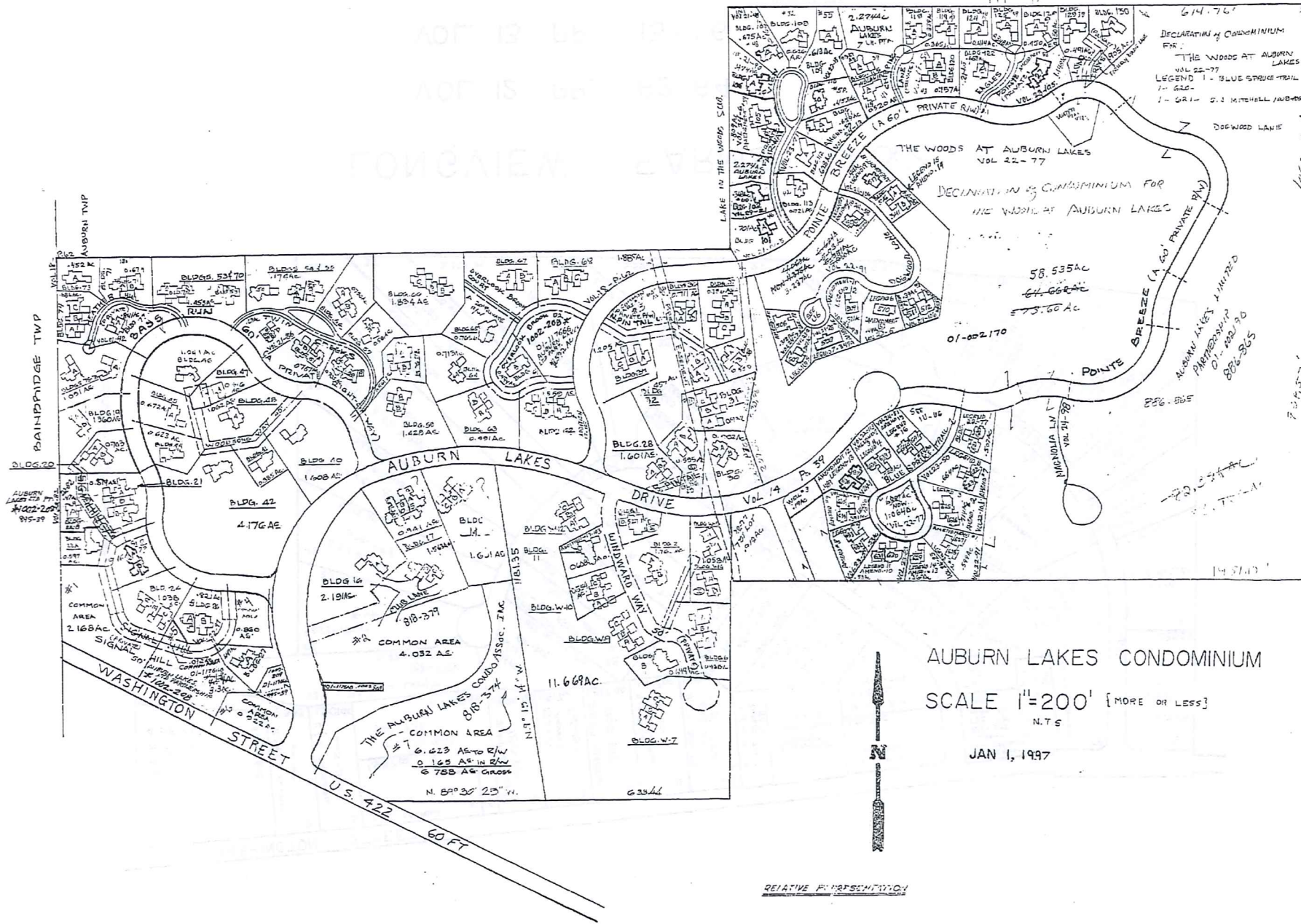
VOL. 12 PP. 62-64

VOL. 13 PP. 13-16

JANUARY 1, 1997
RELATIVE REPRESENTATION

* Inadequate Description
✓ Indicates survey on file with tax map dept.

LAND IN THE WOODS SUBDIVISION VOL. 11 PR. 33



AUBURN LAKES CONDOMINIUM

SCALE 1"=200' [MORE OR LESS]

N.T.S.

JAN 1, 1997

RELATIVE REPRESENTATION

DECLARATION OF CONDOMINIUM
 FOR
 THE WOODS AT AUBURN LAKES
 VOL. 22-77
 LEGEND 1 - BLUE STRIPE TRAIL
 1 - GR-1 - D.J. MITCHELL AND ASSOC.

4.599 AC

108 (V.19.7 To) Floor Plans

TRM-REDI
 1-800-345-7334

SCALE IN 1/16 OF AN INCH

* INADEQUATE DESCRIPTION

1-U
0-1

1-U
0-1

BLDG/UNIT	TRANSFERRED TO	VOL. PG.	TRANSFERRED TO	VOL. PG.	TRANSFERRED TO	VOL. PG.	TRANSFERRED TO	VOL. PG.
BLDG. W-1 A-66 B-66	(WINDWARD WAY) M.L. LAVIN	15 718 161						
BLDG. W-2 A-67 B-67	(WINDWARD WAY) M.L. LAVIN	17 738 161						
BLDG. W-3 A-68 B-68	(WINDWARD WAY) M.L. LAVIN	14 715 161						
BLDG. W-4 A-69 B-69	(WINDWARD WAY) M.L. LAVIN	11 715 161						
BLDG. W-5								
BLDG. W-6 A-70 B-70	(WINDWARD WAY) L.E. BYRLES	15 718 203						
BLDG. W-7 A-71 B-71	(WINDWARD WAY) L.E. BYRLES	14 715 203						
BLDG. W-8 A-72 B-72	(WINDWARD WAY) L.E. BYRLES	13 715 203						
BLDG. W-9 A-73 B-73	(WINDWARD WAY) L.E. BYRLES	12 715 203						
BLDG. W-10 A-74 B-74	(WINDWARD WAY) L.E. BYRLES	11 715 203						
BLDG. W-11 A-75 B-75	(WINDWARD WAY) L.E. BYRLES	10 715 203						
BLDG. W-12 A-76 B-76	(WINDWARD WAY) L.E. BYRLES	9 715 203						
BLDG. W-13 A-77 B-77	(WINDWARD WAY) L.E. BYRLES	8 715 203						
BLDG. W-14 A-78 B-78	(WINDWARD WAY) L.E. BYRLES	7 715 203						
BLDG. W-15 A-79 B-79	(WINDWARD WAY) L.E. BYRLES	6 715 203						
BLDG. W-16 A-80 B-80	(WINDWARD WAY) L.E. BYRLES	5 715 203						
BLDG. W-17 A-81 B-81	(WINDWARD WAY) L.E. BYRLES	4 715 203						
BLDG. W-18 A-82 B-82	(WINDWARD WAY) L.E. BYRLES	3 715 203						
BLDG. W-19 A-83 B-83	(WINDWARD WAY) L.E. BYRLES	2 715 203						
BLDG. W-20 A-84 B-84	(WINDWARD WAY) L.E. BYRLES	1 715 203						
BLDG. W-21 A-85 B-85	(WINDWARD WAY) L.E. BYRLES							
BLDG. W-22 A-86 B-86	(WINDWARD WAY) L.E. BYRLES							
BLDG. W-23 A-87 B-87	(WINDWARD WAY) L.E. BYRLES							
BLDG. W-24 A-88 B-88	(WINDWARD WAY) L.E. BYRLES							
BLDG. W-25 A-89 B-89	(WINDWARD WAY) L.E. BYRLES							
BLDG. W-26 A-90 B-90	(WINDWARD WAY) L.E. BYRLES							
BLDG. W-27 A-91 B-91	(WINDWARD WAY) L.E. BYRLES							
BLDG. W-28 A-92 B-92	(WINDWARD WAY) L.E. BYRLES							
BLDG. W-29 A-93 B-93	(WINDWARD WAY) L.E. BYRLES							
BLDG. W-30 A-94 B-94	(WINDWARD WAY) L.E. BYRLES							
BLDG. W-31 A-95 B-95	(WINDWARD WAY) L.E. BYRLES							
BLDG. W-32 A-96 B-96	(WINDWARD WAY) L.E. BYRLES							
BLDG. W-33 A-97 B-97	(WINDWARD WAY) L.E. BYRLES							
BLDG. W-34 A-98 B-98	(WINDWARD WAY) L.E. BYRLES							
BLDG. W-35 A-99 B-99	(WINDWARD WAY) L.E. BYRLES							
BLDG. W-36 A-100 B-100	(WINDWARD WAY) L.E. BYRLES							
BLDG. W-37 A-101 B-101	(WINDWARD WAY) L.E. BYRLES							
BLDG. W-38 A-102 B-102	(WINDWARD WAY) L.E. BYRLES							
BLDG. W-39 A-103 B-103	(WINDWARD WAY) L.E. BYRLES							
BLDG. W-40 A-104 B-104	(WINDWARD WAY) L.E. BYRLES							
BLDG. W-41 A-105 B-105	(WINDWARD WAY) L.E. BYRLES							
BLDG. W-42 A-106 B-106	(WINDWARD WAY) L.E. BYRLES							
BLDG. W-43 A-107 B-107	(WINDWARD WAY) L.E. BYRLES							
BLDG. W-44 A-108 B-108	(WINDWARD WAY) L.E. BYRLES							
BLDG. W-45 A-109 B-109	(WINDWARD WAY) L.E. BYRLES							
BLDG. W-46 A-110 B-110	(WINDWARD WAY) L.E. BYRLES							
BLDG. W-47 A-111 B-111	(WINDWARD WAY) L.E. BYRLES							
BLDG. W-48 A-112 B-112	(WINDWARD WAY) L.E. BYRLES							
BLDG. W-49 A-113 B-113	(WINDWARD WAY) L.E. BYRLES							
BLDG. W-50 A-114 B-114	(WINDWARD WAY) L.E. BYRLES							
BLDG. W-51 A-115 B-115	(WINDWARD WAY) L.E. BYRLES							
BLDG. W-52 A-116 B-116	(WINDWARD WAY) L.E. BYRLES							
BLDG. W-53 A-117 B-117	(WINDWARD WAY) L.E. BYRLES							
BLDG. W-54 A-118 B-118	(WINDWARD WAY) L.E. BYRLES							
BLDG. W-55 A-119 B-119	(WINDWARD WAY) L.E. BYRLES							
BLDG. W-56 A-120 B-120	(WINDWARD WAY) L.E. BYRLES							
BLDG. W-57 A-121 B-121	(WINDWARD WAY) L.E. BYRLES							
BLDG. W-58 A-122 B-122	(WINDWARD WAY) L.E. BYRLES							
BLDG. W-59 A-123 B-123	(WINDWARD WAY) L.E. BYRLES							
BLDG. W-60 A-124 B-124	(WINDWARD WAY) L.E. BYRLES							
BLDG. W-61 A-125 B-125	(WINDWARD WAY) L.E. BYRLES							
BLDG. W-62 A-126 B-126	(WINDWARD WAY) L.E. BYRLES							
BLDG. W-63 A-127 B-127	(WINDWARD WAY) L.E. BYRLES							
BLDG. W-64 A-128 B-128	(WINDWARD WAY) L.E. BYRLES							
BLDG. W-65 A-129 B-129	(WINDWARD WAY) L.E. BYRLES							
BLDG. W-66 A-130 B-130	(WINDWARD WAY) L.E. BYRLES							
BLDG. W-67 A-131 B-131	(WINDWARD WAY) L.E. BYRLES							
BLDG. W-68 A-132 B-132	(WINDWARD WAY) L.E. BYRLES							
BLDG. W-69 A-133 B-133	(WINDWARD WAY) L.E. BYRLES							
BLDG. W-70 A-134 B-134	(WINDWARD WAY) L.E. BYRLES							
BLDG. W-71 A-135 B-135	(WINDWARD WAY) L.E. BYRLES							
BLDG. W-72 A-136 B-136	(WINDWARD WAY) L.E. BYRLES							
BLDG. W-73 A-137 B-137	(WINDWARD WAY) L.E. BYRLES							
BLDG. W-74 A-138 B-138	(WINDWARD WAY) L.E. BYRLES							
BLDG. W-75 A-139 B-139	(WINDWARD WAY) L.E. BYRLES							
BLDG. W-76 A-140 B-140	(WINDWARD WAY) L.E. BYRLES							
BLDG. W-77 A-141 B-141	(WINDWARD WAY) L.E. BYRLES							
BLDG. W-78 A-142 B-142	(WINDWARD WAY) L.E. BYRLES							
BLDG. W-79 A-143 B-143	(WINDWARD WAY) L.E. BYRLES							
BLDG. W-80 A-144 B-144	(WINDWARD WAY) L.E. BYRLES							
BLDG. W-81 A-145 B-145	(WINDWARD WAY) L.E. BYRLES							
BLDG. W-82 A-146 B-146	(WINDWARD WAY) L.E. BYRLES							
BLDG. W-83 A-147 B-147	(WINDWARD WAY) L.E. BYRLES							
BLDG. W-84 A-148 B-148	(WINDWARD WAY) L.E. BYRLES							
BLDG. W-85 A-149 B-149	(WINDWARD WAY) L.E. BYRLES							
BLDG. W-86 A-150 B-150	(WINDWARD WAY) L.E. BYRLES							
BLDG. W-87 A-151 B-151	(WINDWARD WAY) L.E. BYRLES							
BLDG. W-88 A-152 B-152	(WINDWARD WAY) L.E. BYRLES							
BLDG. W-89 A-153 B-153	(WINDWARD WAY) L.E. BYRLES							
BLDG. W-90 A-154 B-154	(WINDWARD WAY) L.E. BYRLES							
BLDG. W-91 A-155 B-155	(WINDWARD WAY) L.E. BYRLES							
BLDG. W-92 A-156 B-156	(WINDWARD WAY) L.E. BYRLES							
BLDG. W-93 A-157 B-157	(WINDWARD WAY) L.E. BYRLES							
BLDG. W-94 A-158 B-158	(WINDWARD WAY) L.E. BYRLES							
BLDG. W-95 A-159 B-159	(WINDWARD WAY) L.E. BYRLES							
BLDG. W-96 A-160 B-160	(WINDWARD WAY) L.E. BYRLES							
BLDG. W-97 A-161 B-161	(WINDWARD WAY) L.E. BYRLES							
BLDG. W-98 A-162 B-162	(WINDWARD WAY) L.E. BYRLES							
BLDG. W-99 A-163 B-163	(WINDWARD WAY) L.E. BYRLES							
BLDG. W-100 A-164 B-164	(WINDWARD WAY) L.E. BYRLES							

TRW-REDI
1-800-345-7334



BLDG/UNIT	TRANSFERRED TO	Vol Pg	TRANSFERRED TO	Vol Pg	TRANSFERRED TO	Vol Pg	TRANSFERRED TO	Vol Pg
BLDG 30 A-184 B-184	(SOUTH PINNACLE) L.D. REDD B.M. BENNETT	15 70 290 287 293 287						
BLDG 31 A-186 B-186 C-180	(NORTH PINNACLE) L.M. & A. CARTRIGHT R.A. FERTSCHKE R.C. L. & L. JACOBSON	15 83 333 335 333 337 336 330	L.M. & A. CARTRIGHT TRUST	029 211 029 215				
BLDG 32 A-182 B-181	(NORTH PINNACLE) D.C. & R.G. SKINNER W.K. OLIVER	15 91 331 329 331 329						
BLDG 33								
BLDG 34 A-160 B-162 C-164	N. PINTNER DR G. & U. HARTLEY V. & B. WEBER R.J. & L.M. SRS	15 1 713 671 722 476 726 479						
BLDG 35								
BLDG 36 A-170 B-172	(NORTH PINNACLE) A.D. STEWART E.V. GORDON	15 149/177 991 242 753 1162		057 1057	ROY TRUST Co. NE. Ohio. N.A. Trustee	1027 1055		
BLDG 37 A-174 B-174 C-178	(NORTH PINNACLE) E.E. & C.L. GIBSON R.V. HOUSEL E.E. & E.W. SCHUBERT	15 123/14 374 341 356 338 980 445		067 1027				
BLDG 38 A-180 B-182	(NORTH PINNACLE) W.A. & J.M. SCHWABER H. & N. BURSTEIN	16 112/3 178 109 179 107						
BLDG 39								
BLDG 40 A-188 B-188	(WOODSONG WAY) C.T. G. ROTH	16 118/122 331 241						
BLDG 41 A-190 B-190	(WOODSONG WAY) L.J. & E.H. DOLAN	15 106/17 844 24						
BLDG 42 A-192	(WOODSONG WAY) P.E. HENDERSON	16 113/13 871 138		072 092				
BLDG 43								
BLDG 44 A-196	(WOODSONG WAY) K. & E. SORACE	18 116/53 853 156						
BLDG 45 A-198	(WOODSONG WAY) M. & U. STANTON-RICKS	17 113/8 321 262						
BLDG 46 A-200	(WOODSONG WAY) R. & R. C. GUMMARD	17 113/8 321 262						
BLDG 47 A-202	(WOODSONG WAY) M. PENSERO	17 113/8 321 262						
BLDG 48 A-204	(WOODSONG WAY) N.L. RISIUS	18 33/38 334 370		002 323				
BLDG 49								
BLDG 50 A-210 B-212	(TWIN CREEKS) L.R. CHAPPEL P. & E. CHAPPEL	16 122/2 137 161 208 37		007 478	J.M. ANDERBERG, TRUSTEE	1072 1801		
BLDG 51 A-211 B-216	(TWIN CREEKS) R.T. & J. KRAUS K.M. CARLSON	19 112/1 865 424 895 72		094 219				
BLDG 52 A-218	(TWIN CREEKS) L.P. SWITZER	21 52 151 792						
BLDG 53 A-214 B-216	(TWIN CREEKS DRIVE) G. & S. WILKES L. & S. KAUFER	17 82/6 817 564 813 919		070 363				
BLDG 54 A-218 B-210	(TWIN CREEKS DRIVE) D. & J. PIPER E.A. LEONETTI	16 117/65 307 181						
BLDG 55 A-214 B-216	(TWIN CREEKS DRIVE) G. & S. WILKES L. & S. KAUFER	16 119/65 307 181						
BLDG 56 A-218 B-210	(TWIN CREEKS DRIVE) D. & J. PIPER E.A. LEONETTI	16 117/65 307 181						
BLDG 57 A-218 B-210	(TWIN CREEKS DRIVE) D. & J. PIPER E.A. LEONETTI	16 117/65 307 181						
BLDG 58 A-218 B-210	(TWIN CREEKS DRIVE) D. & J. PIPER E.A. LEONETTI	16 117/65 307 181						
BLDG 59 A-218 B-210	(TWIN CREEKS DRIVE) D. & J. PIPER E.A. LEONETTI	16 117/65 307 181						
BLDG 60								
BLDG 61 A-218 B-210	(OVERLOOK BROOK DRIVE) E. BELTON	18 145/93 852 84		008 1234	V. & I. F. S. K. Loop	0071 1001	RM LSF Bloch	1001 910
BLDG 62 A-218 B-210 C-218	(OVERLOOK BROOK DRIVE) T.J. & P.A. KREBS A.M. KOVAL X. & C. WILSON	16 8-11 848 1929 942 258 113 146						
BLDG 63 A-218 B-210	(OVERLOOK BROOK DRIVE) A. & F. BROOK C.R. ZACHRY	16 82 724 1726 726 1636		083 1035 083 112	C.D. FERRARO, JR. C.R. ZACHRY, JR. TRUSTEE			

BLDG/UNIT	TRANSFERRED TO	Vol. Pg.	TRANSFERRED TO	Vol. Pg.	TRANSFERRED TO	Vol. Pg.	TRANSFERRED TO	Vol. Pg.
BLDG 64 A-310	(OVERLOOK BROOK TRUST) M. S. DUFFY	16 1035 808 136						
BLDG 65 A-312	(OVERLOOK BROOK TRUST) J. A. BALACK	16 1036 803 127						
BLDG 66 A-314	(OVERLOOK BROOK TRUST) M. S. DUFFY	16 1037 804 127						
BLDG 67 A-314	(OVERLOOK BROOK TRUST) R. C. WOOD & T. S. LOMBARDI	16 1038 804 127						
BLDG 67 A-314	(OVERLOOK BROOK TRUST) C. J. & M. S. GIBLIN	16 1039 804 127						
BLDG 67 A-314	(OVERLOOK BROOK TRUST) E. LAZIO	16 1040 804 127						
BLDG 67 A-314	(OVERLOOK BROOK TRUST) T. J. JOHNSON	16 1041 804 127						
BLDG 67 A-314	(OVERLOOK BROOK TRUST) M. D. YOUNG	16 1042 804 127						
BLDG 67 A-314	(OVERLOOK BROOK TRUST) A. S. THOMPSON	16 1043 804 127						
BLDG 70 A-210	(HEATHER HILL) P. & C. SAGANAK	17 1044 815 105						
BLDG 70 B-208	(HEATHER HILL) V. & P. SCODIS	17 1045 813 107						
BLDG 71 A-214	(HEATHER HILL) J. A. GURPZWEIG	17 1046 814 108						
BLDG 71 B-212	(HEATHER HILL) W. J. E. A. CLIBURN	17 1047 814 108						
BLDG 72								
BLDG 73 A-216	(HEATHER HILL) P. & R. WILKINSON	18 1048 831 528						
BLDG 74 A-212	(HEATHER HILL) C. C. BEATH	17 1049 831 534						
BLDG 74 B-210	(HEATHER HILL) W. J. B. MILLER	17 1050 831 534						
BLDG 75 A-214	(HEATHER HILL) R. E. BLAKE FAMILY TRUST	17 1051 831 534						
BLDG 76 A-216	(HEATHER HILL) S. BLANCHINI & N. BEAN	17 1052 831 534						
BLDG 77 A-212	(HEATHER HILL) J. E. & D. M. GALLAGHER	17 1053 831 534						
BLDG 78								
BLDG 79								
BLDG 80								
BLDG 81								
BLDG 82								
BLDG 83								
BLDG 84								
BLDG 85								
BLDG 86								
BLDG 87								
BLDG 88								
BLDG 89								
BLDG 90								
BLDG 91								
BLDG 92								
BLDG 93								

BLDG/UNIT	TRANSFERRED TO	VOL	Pg.	TRANSFERRED TO	VOL	Pg.	TRANSFERRED TO	VOL	Pg.	TRANSFERRED TO	VOL	Pg.
BLDG 91												
BLDG 95												
BLDG 96												
BLDG 97												
BLDG 98												
BLDG 99												
BLDG 100												
BLDG 101	(FAIRWAY VIEW) S.C. RIGBY	21	1-3 1013									
BLDG 102	FAIRWAY VIEW - AMBROSE O.A. FLETCHER	24 1024	21 1024									
BLDG 103												
BLDG 104	FAIRWAY VIEW AMBROSE #5 D.C. MEYEROFF	22 1005	06 057				D.C. MEYEROFF	1007	934			
BLDG 105	FAIRWAY VIEW AMBROSE #5	24	06				D.W. + S.M. MACHIN	1061	1115			
BLDG 106	(FAIRWAY VIEW) A.C. DICK, TRUSTEE	21	70									
BLDG 107	(FAIRWAY VIEW) C.L. RYE	21 944	48-51 918									
BLDG 108	(FAIRWAY VIEW) E. S. GALLO	17 831	1137 831				D.C. J.A. PLYOR	990	1039			
BLDG 109	FAIRWAY VIEW - AMBROSE #5 H. FRENZ	23 1031	136-15 3222									
BLDG 110	FAIRWAY VIEW AMBROSE #5 DR. SEYMOUR S. WISBY	23 1031	172-27 1016									
BLDG 111	FAIRWAY VIEW - AMBROSE #5 T.S. SHUBERT	24 1004	73 900									
BLDG 112	FAIRWAY VIEW (AMBROSE #5) FRYER MICHAEL BROS. CORP.	23 1031	71 920				J.S. JR. + B.M. GOSZCZYKA	1052	1121			
BLDG 113	(FAIRWAY VIEW) S. PETERSON	19 878	31-35 926									
BLDG 114	(CHIPPING LANE) B. R. BESSCH	19 855	16-18 488									
BLDG 115	(CHIPPING LANE) D.S. J. P.J. MANNING	18 849	131-41 807				D.C. J. J. MARTZ	1056	947			
BLDG 116												
BLDG 117												
BLDG 118	(CHIPPING LANE) D.B. WISSELMAN	18 850	145-15 1216									
BLDG 119	(CHIPPING LANE) P.J. + R.M. MOYCE	18 860	76-79 316									
BLDG 120	(CHIPPING LANE) S.L. + M.R. DURCHSLAG	19 896	59-63 678									
BLDG 121	(CHIPPING LANE) P. + J. FEYER	18 861	76-79 955				R.E. F. + G. GARDNER	1077	98			
BLDG 122	(CHIPPING LANE) R.A. + G.B. NEWBORN	18 871	76-79 12									

1-800-345-7334 TRM-REDI
SCALE IN 1/16 OF AN INCH

THE WOODS AT AUBURN LAKES

10-06

BLDG. / Address	ROAD NAME	DATE	AC.	PLAT -	AMENDMENT	VOL	PG	TRANSFERRED TO:	VOL	PG.
620	BLUE SPRUCE TRAIL (PVT)	3/95	.507	LEGEND #1	ORIGINAL	22	77			
621	"	7/95	.507	LEGEND #1	ORIGINAL	22	77	S. J. MITCHELL	1008	1060
622	"	7/96	.664	LEGEND #2	AMENDMENT #7	23	50	D+P WINTIN	1049	1022
623	"	7/96	.664	LEGEND #2	AMENDMENT #7	23	50	D+C WAKEMAN	1041	982
625	BLUE SPRUCE TRAIL	7/95	.714	LEGEND #3	AMENDMENT #2	22	103	G+W SILVER	1030	785
626	"	7/95	.714	LEGEND #3	AMENDMENT #2	22	103	J.M. WALKER	1032	640
627	"	5/95	.599	LEGEND #2	AMENDMENT #1	22	91	J.M. TAYLOR	1015	897
628	BLUE SPRUCE TRAIL	5/95	.599	LEGEND #2	AMENDMENT #1	22	91	M.H. BAUMGARTNER, TRUSTEE	1032	1091
629	BLUE SPRUCE TRAIL	8/96	.360	LEGEND #4	AMENDMENT #13	24	25	AMERI-CON AUBURN, INC.	1070	836
630	BLUE SPRUCE TRAIL	6/96	.530	LEGEND #11	AMENDMENT #10	23	83	AMERI-CON AUBURN, INC.	1059	1048
631	BLUE SPRUCE TRAIL	6/96	.530	LEGEND #11	AMENDMENT #10	23	83	AMERI-CON AUBURN, INC.	1059	1048
632	BLUE SPRUCE TRAIL	4/95	.530	LEGEND #9	AMENDMENT #8	23	59	AMERI-CON AUBURN, INC.	1052	491
633	"	4/96	.530	LEGEND #9	AMENDMENT #8	23	59	AMERI-CON AUBURN, INC.	1044	309
634	BLUE SPRUCE TRAIL	9/10	.391	LEGEND #10	AMENDMENT #9	23	44	J.A. BARRETT & P. COLLIER	1050	1033
635	"	5/10	.391	LEGEND #10	AMENDMENT #9	23	64	AMERI-CON AUBURN, INC.	1053	1290
636	BLUE SPRUCE TRAIL	7/96	.489	LEGEND #13	AMENDMENT #12	24	01	AMERI-CON AUBURN, INC.	1060	579
637	"	7/96	.489	LEGEND #13	AMENDMENT #12	24	01	AMERI-CON AUBURN, INC.	1061	770
638	BLUE SPRUCE TRAIL	3/95	.528	LEGEND #4	AMENDMENT #3 (10/96)	22	113	J.R. PERKINS	1043	58
639	"	7/95	.528	LEGEND #4	AMENDMENT #3	22	113	A+D BARBER	1026	649K
640	BLUE SPRUCE TRAIL	11/96	.524	LEGEND #16	AMENDMENT #15	24	51	AMERICAN AUBURN, INC.	1078	37
641	"	11/96	.524	LEGEND #16	AMENDMENT #15	24	51	AMERICAN AUBURN, INC.	1078	37
	DOGWOOD LANE (PVT)	9/95	1.124	LEGEND #1	ORIGINAL	22	77			
	DOGWOOD LANE (2.636 AC)	5/95		LEGEND #2	AMENDMENT #1	22	91			
500	DOGWOOD LANE (LEAVING #375A)	11/96	.340K	LEGEND 17 -	AMENDMENT 16	24	58	AMERICAN AUBURN, INC.	1079	670
506	DOGWOOD LANE (LEAVING #403A)	11/96	.322K	LEGEND 18	AMENDMENT 17	24	79	AMERICAN AUBURN, INC.	1083	918
507	DOGWOOD LANE (LEAVING #307A)	12/96	.344K	LEGEND #5	AMENDMENT #4	23	02	W+L ANDREWS	1030	878
508	DOGWOOD LANE (LEAVING #5581A)	11/95	.397	LEGEND #7	AMENDMENT #6	23	28	A+C GRINA	1035	275
509	DOGWOOD LANE (LEAVING #5060A)	7/96	.421K	LEGEND #12	AMENDMENT #11	23	93	AMERICAN AUBURN, INC.	1060	1215
510	DOGWOOD LANE (LEAVING #573A)	8/10	.432K	LEGEND #6	AMENDMENT #5	23	06	J+G MORRISH	1029	122
511	DOGWOOD LANE (LEAVING #385A)	7/97	.385K	LEGEND #19	AMENDMENT #18	24	106			
512	"	"	"	LEGEND #19	"	24	106			
514A	DOGWOOD LANE (LEAVING #719A)	1/11	.341	LEGEND 15	AMENDMENT 14	24	40			
514B	"	"	"	"	"	24	44	American Auburn, Inc	1075	301
517	DOGWOOD LANE (LEAVING #3237)	3/99	.441	LEGEND 19	AMENDMENT 18	24	106			
TOT LOT #12A	AUBURN LAKES DRIVE	3/95		LEGEND #1	ORIGINAL	22	77			
WELL # 3	"	3/95		"	"	22	77			
WATER PLANT #42A	POINT BEETLE DRIVE	3/95		"	"	22	77			
	DOGWOOD LANE	3/95		LEGEND #1	ORIGINAL	22	77			

- Auburn Twp. -

TRI-REMI
 1-800-345-7334
 SCALE IN 1/10 OF AN INCH